

: TECHNOLOGY
: TRANSFER IN A
: **CHANGING**
: **ENVIRONMENT**

ANNUAL CONFERENCE

23-25 MAY 2018 | LIÈGE, BELGIUM

#ASTPPROTON18

Avec le soutien de
la





TABLE OF CONTENTS

.....

ASTP-PROTON IS THE PREMIER, PAN-EUROPEAN ASSOCIATION OF PROFESSIONALS INVOLVED IN KNOWLEDGE TRANSFER AMONG UNIVERSITIES, PUBLIC RESEARCH ORGANISATIONS AND INDUSTRY.

.....

ACKNOWLEDGEMENTS	4
FORTHCOMING EVENTS	6
PRESIDENT'S WELCOME	7
FLOOR PLAN	8
PROGRAMME AT A GLANCE	12
CONFERENCE MEDIA	15
WEDNESDAY 23RD MAY	18
THURSDAY 24TH MAY	24
FRIDAY 25TH MAY	42
VOLUNTEERS AND STAFF	50
SPONSORS' DIRECTORY	59



THANK YOU

4

HOSTING PARTNERS



SILVER SPONSOR



SPONSORS



5

SPONSORS



SUPPORTERS



EU PARTNERS





FORTHCOMING EVENTS

2018

SUMMER SCHOOL (IN CONJUNCTION WITH TII)

- Capturing and Organising Research Business Opportunities

*2-6 July
Venice, Italy*

TRAINING COURSES

- Fundamentals of Technology Transfer
- Creating Successful Spin-outs
- Organising your KTO for Growth and Success

*19-21 September
Leiden, the Netherlands*

FALL MEETING (IN PARTNERSHIP WITH BRAVE NEW WORLD)

*7-8 November
Leiden, the Netherlands*

TRAINING COURSE

- Social Sciences, Humanities, and Arts

*10-12 December
Vienna, Austria*



2019

TRAINING COURSES

- Software Specific Challenges in Technology Transfer
- Technology Licensing
- Marketing and Negotiation

*23-25 January
Sitges, Spain*



WELCOME

Dear Participant,

A warm welcome to ASTP-Proton's Annual Conference: Technology Transfer in a Changing Environment.

We find ourselves in Liège, an ancient city dating back to 558 AC. This remarkable place has not only been a driver of many important historical events, it is also prominent in the history of knowledge exchange. The TTO at the University of Liège was established as early as 1989; the second TTO in the country. Belgium today is a vibrant eco-system of knowledge transfer where industry and PROs together support regional sustainable growth. We are delighted to have the Belgian eco-system hosting the most prominent pan-European network in knowledge exchange.

We also have much to look forward to in the years ahead. ASTP-Proton will celebrate its 20th anniversary in 2019, and our 20th annual conference will be held in 2020.

Knowledge exchange is increasingly the focus of the research funding organisations and governments. Hence, we need to constantly evolve, increasing our connectedness and influence regionally, nationally, and at European level. This involves gathering data and perspectives from the membership and using it to influence policies to enhance the knowledge exchange ecosystem and our profession.

Thanks to the efforts of the Digital Resources Working Group, we are excited by the expansion of services to members. By harnessing and developing an exciting range of additional resources, we continue to evolve the quality of our training tools and methods.

The increasing relevance of the knowledge transfer world is reflected in the ever-increasing number of people wishing to join us. Our membership reflects a significant percentage of the active knowledge transfer offices across Europe, but our mission is to encourage all active professionals to become part of our association. Therefore, we aim to make our association even more accessible and relevant to the broadest cross-section of professionals. This includes reviewing our membership structures, engaging with industry-based professionals and developing even closer synergistic relationships with national associations, whose dynamic evolution we support through their role in our National Associations Advisory Committee (NAAC).

For this week, let's focus on our exciting programme stacked with ambitious topics, profound learning and perennials such as conflict of interest and seed investment funding. We have sessions featuring speakers from all over the world such as Israel and China; reinforcing the importance of international connections and learning from international experience and best practice. We are certain that, in typical ASTP-Proton style, you will make the speakers feel appreciated and help them experience our conference where delivering a presentation is a two-way conversation.

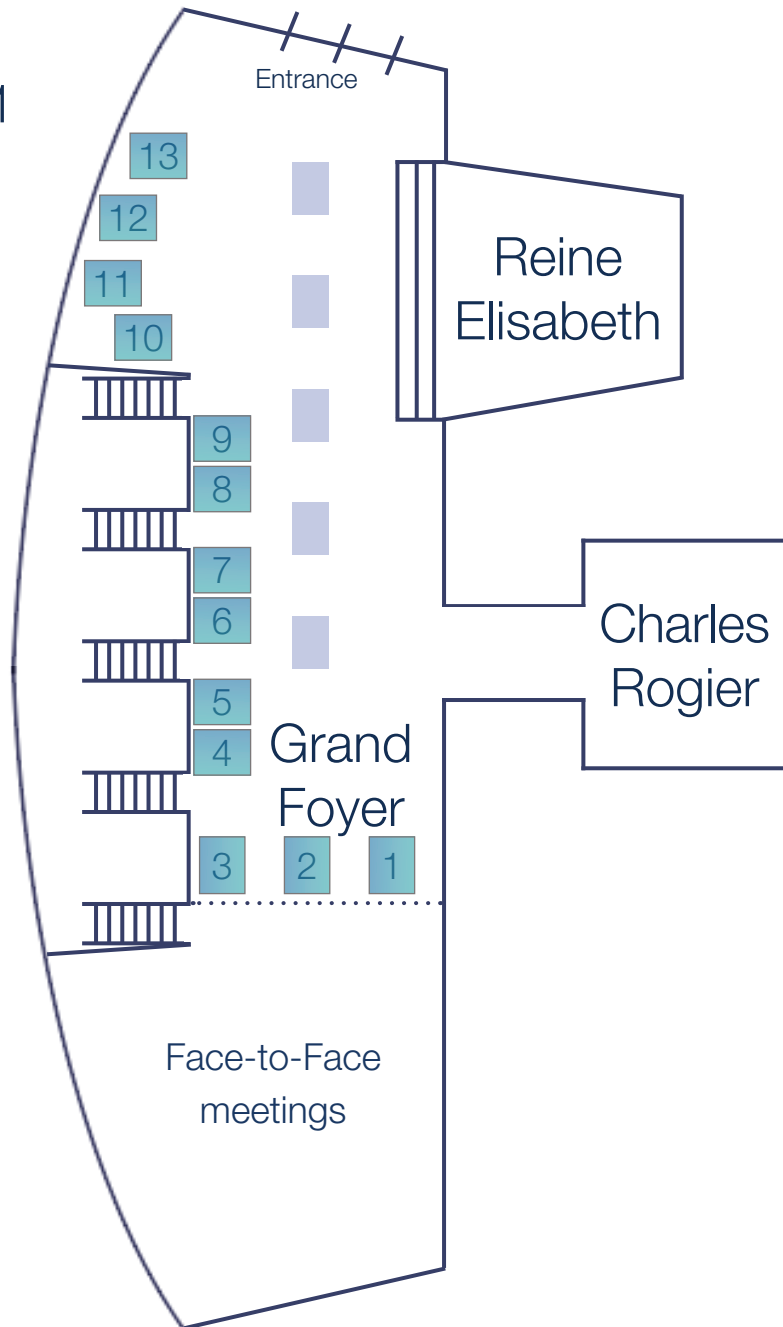
For now, enjoy the presentations and the social programme, use the app organise face to face meetings, and a feel part of the learning community which is ASTP-Proton.

Henric Rhedin
President
ASTP-Proton



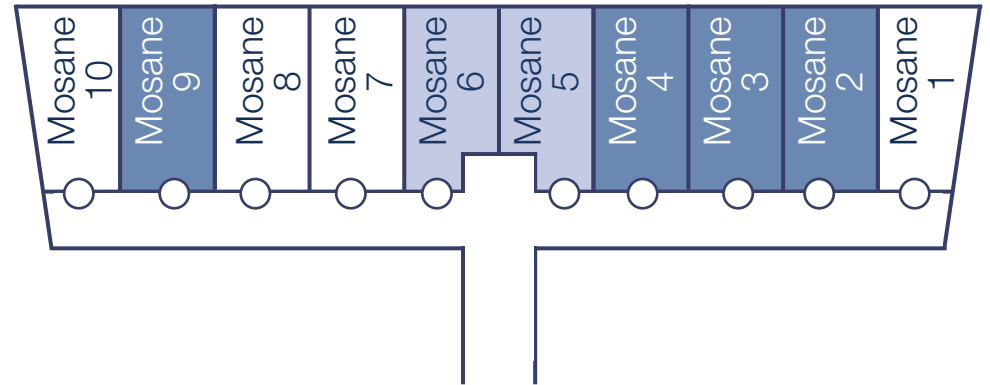
Floor Plan

Floor 1



Palais des Congrès

Floor -1



Booth 1	myIP	Booth 5	Ximbio	Booth 9	tto
Booth 2	Foresight ST	Booth 6	Puratos	Booth 10 & 11	EPO
Booth 3	KSE (Thursday only) featuring V.O. Patents & Trademarks	Booth 7	LIEU Network	Booth 12	EU Japan TT Helpdesk
Booth 4	NLC	Booth 8	KIC	Booth 13	ATTP

Introduction

Technology transfer professionals are leaders in the complex process of moving valuable discoveries from universities and other research centers into the marketplace. The Alliance of Technology Transfer Professionals (ATTP) confers the world-recognized Registered Technology Transfer Professional (RTTP) credential. RTTP status recognizes the accomplishments, roles, skills, knowledge, and deal-making expertise of technology transfer professionals.

ATTP Associations

The Alliance of Technology Transfer Professionals (ATTP) is an alliance of eleven knowledge and technology transfer associations. The founding ATTP associations are: ASTP-Proton, AUTM, KCA and PraxisAuril.

The associations that have since joined: Redtransfer, SNITTS, SARIMA, STEM, TechnologieAllianz, UNITT and ÜSIMP. We invite national knowledge and technology transfer associations to join ATTP.

ATTP Mission

ATTP's mission is to promote and maintain global standards in knowledge and technology transfer. ATTP does this via the Registered Technology Transfer Professional (RTTP) designation, the international professional standard for knowledge transfer and commercialization practitioners working in universities, industry and government labs.

Routes to registration

There are three routes to registration in order to support early, mid, and late career applicants:

Route I – for anyone in the early to middle stages of a technology transfer career

Route II – for mid-career (3-5 years) tech transfer professionals. Experience, training and qualifications are judged on a flexible case-by-case basis.

Route III – for senior Technology Transfer practitioners with a demonstrated track record of achievement and contribution to the profession.

Visit the website of ATTP for full details and requirements of each route at www.attp.info.

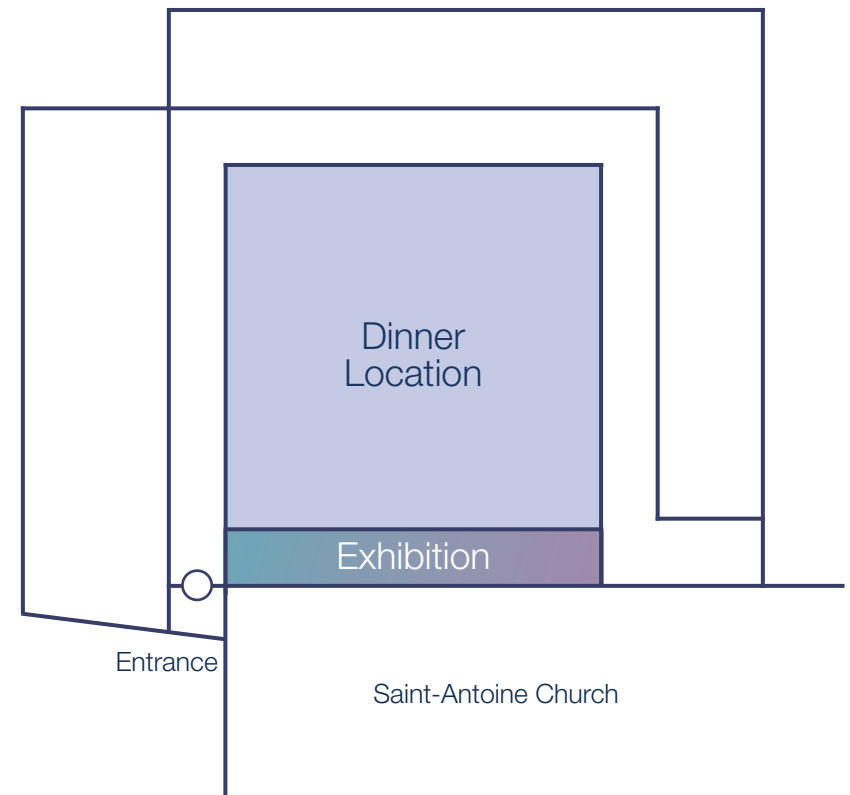
Next review dates:

20 July 2018 / 18 October 2018

Dinner Venue

Museum of Walloon Life

Rue des Mineurs, 4000 Liège



PROGRAMME AT A GLANCE

WEDNESDAY

10:30-12:00	TT Primer Registration required	Page 18 Mosane 2
12:30-15:30	Biannual Face-to-Face meeting (NAAC representatives only)	Page 18 Mosane 3
13:00-15:30	Progress-TT Mentored Universities	Page 19 Mosane 2
13:00-17:00	Half-day Masterclass I Advanced Legal Topics	Page 19 Mosane 5 & 6 Registration required
13:30-15:30	Special Interest Group Meeting	Page 21 Software: Mosane 4 SSHA: Mosane 9
13:30-16:00	Liège Science Park Guided Tour Registration required	Page 22 Meeting Point: Palais des Congrès
16:00-18:00	Liège City: Guided Tour Registration required	Page 23 Meeting Point: Liège Tourist Office Quai de la Goffe 13, 4000 Liège
18:00-19:30	Welcome Reception	Page 23 Town Hall La Violette Place du Marche 2, 4000 Liège

19:30 Directors' Dinner | Registration required | Page 23 | Palace of Prince Bishops | Place Saint-Lambert 18, 4000 Liège

THURSDAY

08:15	Registration Desk Open Grand Foyer Palais des Congrès		
08:00-08:45	Morning Meeting for New Members	Page 24 Charles Rogier	
09:00-10:30	Opening Plenary Keynote: Innovation: it's not what it used to be	Page 27 Reine Elisabeth	
10:30-11:00	Coffee Break Grand Foyer	Schedule Face-to-Face Meetings Grand Foyer	
11:00-12:30	FIRST PARALLEL SESSION : Track 1: Engagement with Academic Institutions : Options for Technology Transfer Policy in EU : Context Page 28-29 Reine Elisabeth	Track 2: Engagement with Young Companies : From Tech Transfer to Spin-out Founder : Page 28-29 Mosane 5 & 6	Track 3: Engagement with Established Industry : Triple Helix Partnerships Fostering Innovation : Page 28-29 Charles Rogier
12:30-13:30	Lunch Grand Foyer	Schedule Face-to-Face meetings Grand Foyer	
13:30-15:00	KNOWLEDGE STOCK EXCHANGE : MARKETPLACE PAGE 30-31 Reine Elisabeth	INITIATIVE SHARING PAGE 32-33 : Charles Rogier	ECOSYSTEM INSIGHTS PAGE 34-35 : Mosane 5 & 6
15:00-15:30	Coffee Break Room: Grand Foyer	Schedule Face-to-Face meetings Grand Foyer	
15:30-17:00	SECOND PARALLEL SESSION : Track 1: Engagement with Academic Institutions : New Models for Strategic Partnerships : Page 36-37 Reine Elisabeth	Track 2: Engagement with Young Companies : Serving Start-ups Better with Express Licensing : Page 36-37 Mosane 5 & 6	Track 3: Engagement with Established Industry : Doing Business with China: how and when? : Page 36-37 Charles Rogier
17:00-18:00	General Assembly (ASTP-Proton members only)	Page 38 Reine Elisabeth	
18:30	Conference Dinner	Page 41 Museum of Walloon Life Rue des Mineurs, 4000 Liège	

FRIDAY

07:00	Morning Run	Meeting Point: Front entrance, Liège-Guillemins train station	
09:00-10:30	Plenary Panel Proof of Concept Funding for Innovations	Page 43 Reine Elisabeth	
10:30-11:00	Coffee Break Grand Foyer	Schedule Face-to-Face meetings Grand Foyer	
11:00-12:30	THIRD PARALLEL SESSION : Track 1: Engagement with Academic Institutions : Conflicts of Interest : Page: 44-45 Reine Elisabeth	Track 2: Engagement with Young Companies : Student Entrepreneurship: the pros and cons : Page 44-45 Mosane 5 & 6	Track 3: Engagement with Established Industry : The Unexpected Partner : Page 44-45 Charles Rogier
12:30-13:30	Lunch Grand Foyer	Schedule Face-to-Face meetings Grand Foyer	
13:30-15:00	FOURTH PARALLEL SESSION : Track 1: Engagement with Academic Institutions : Learning from Tech Transfer Successes in Israel : Page: 46-47 Reine Elisabeth	Track 2: Engagement with Young Companies : Managing Patent Portfolios : Page 46-47 Mosane 5 & 6	Track 3: Engagement with Established Industry : Licensing: getting the best of both worlds; : TTOs and industry Page 46-47 Charles Rogier
15:00-15:15	Coffee Break Grand Foyer	Schedule Face-to-Face meetings Grand Foyer	
15:15-16:15	Final Plenary Innovation in Chocolate	Page: 48 Reine Elisabeth	

Le Conseil des recteurs réunit les recteurs des institutions universitaires de la Fédération Wallonie-Bruxelles



Monsieur Vincent BLONDEL

Recteur de l'Université catholique de Louvain (UCL)
Président



Monsieur Albert CORHAY

Recteur de l'Université de Liège (ULiège)
Vice-Président



Monsieur Yvon ENGLERT

Recteur de l'Université Libre de Bruxelles (ULB)
Vice-Président



Monsieur Calogero CONTI

Recteur de l'Université de Mons (UMONS)



Monsieur Naji HABRA

Recteur de l'Université de Namur (UNamur)



Monsieur Pierre JADOUL

Recteur de l'Université Saint-Louis (USL-B)



Le secrétariat du CRef est assuré par le F.R.S.-FNRS

CONFERENCE MEDIA

INSTALL THE APP

To install the conference app, follow these steps:

1. Go to get.networkapp.eu for the correct iPhone, Android or Windows Phone version
2. Register via LinkedIn or your e-mail
3. Enter the event code: Ascenion18
4. Get networking!



ASTP-Proton will be streaming live on YouTube, let your colleagues know!



ASTP-Proton



@ASTPProton

#ASTPPROTON18

CONFERENCE MEDIA

SCHEDULE YOUR FACE-TO-FACE MEETINGS

Use the smartphone app to browse the programme, contact the people you want to meet, and schedule your face-to-face meetings.
The Grand Foyer is available throughout the conference for face-to-face meetings.



Review the programme



Discover your fellow guests
and conference speakers

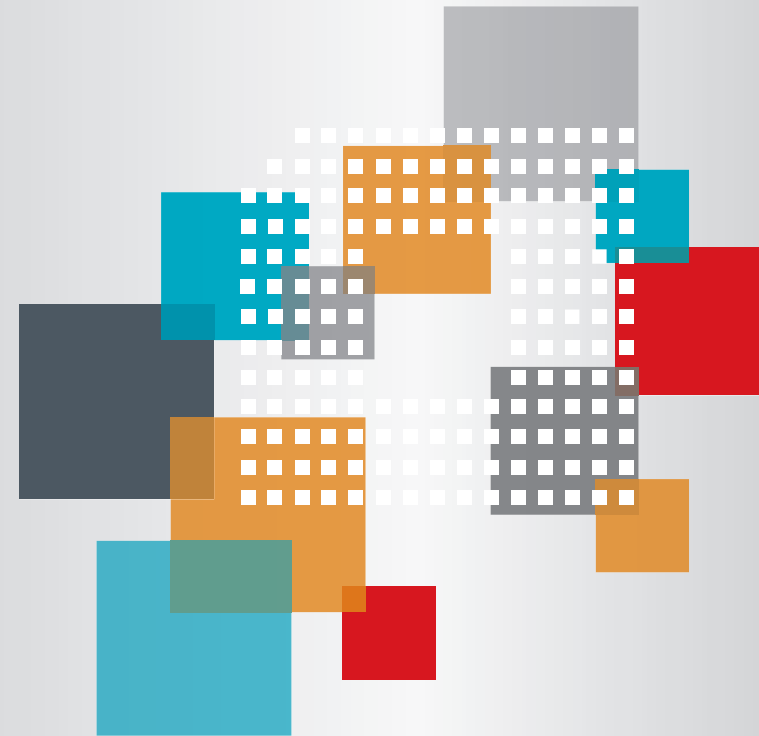


Connect and make appointments
with the people you want to meet



PATLIB – the European network of IP information centres

- 300 patent information centres throughout Europe
- innovation support in your own language
- intellectual property expertise
- hand in hand with technology transfer services





WEDNESDAY 23 MAY



PRE-CONFERENCE MEETINGS & SOCIAL PROGRAMME

10:00 - 12:00

| REGISTRATION REQUIRED

TT PRIMER

Trainer: Karen Laigaard, Director, TTO University of Copenhagen, Denmark | Member, Programming Committee, ASTP-Proton

This workshop will introduce the various aspects of knowledge transfer, answer some key questions and provide a solid understanding of what success can look like. Take this opportunity to get to know your peers, extend your network and learn from seasoned professionals.

Palais des Congrès | Mosane 2

12:00 - 17:00

| REGISTRATION DESK OPEN

Collect your badge from the ASTP-Proton desk, and meet the HQ staff. The desk will be staffed throughout the conference for your questions and queries.

Palais des Congrès | Grand Foyer

12:30 - 15:30

| INVITATION ONLY

BIANNUAL FACE-TO-FACE MEETING NATIONAL ASSOCIATIONS ADVISORY COMMITTEE

Moderator: Andrew Carlin, Vice President NAAC, ASTP-Proton

Representatives from all the European national associations are invited to this meeting chaired by Andrew Carlin.

Palais des Congrès | Mosane 3

13:00 - 15:30

| INVITATION ONLY

PROGRESS-TT MENTORED UNIVERSITIES

Facilitator: Alan Kennedy, Key Knowledge Expert, MITO Technology, Italy

PROGRESS-TT was a 3-year pilot initiative funded by the European Commission's Horizon 2020 research and innovation programme which developed new training methodologies, tools, and insights to build capacity for Technology Transfer in TTOs/PROs across Europe. As part of this program, 30 TTOs went through a process of intensive 1-to-1 coaching and mentoring, complimenting other PROGRESS-TT training events, and aimed at developing the capacity of the TTO as a whole.

The pilot ended in 2017 and this meeting is an opportunity for the 30 TTOs to reunite with their coaches and mentors, appraise their involvement in the project, and look ahead to the potential for future projects to advance the innovative learning piloted by PROGRESS -TT.

Palais des Congrès | Mosane 2

13:00 - 17:00

| REGISTRATION REQUIRED

HALF-DAY MASTERCLASS

Trainer: Kevin Nachtrab, Senior IP Attorney, Johnson and Johnson, Belgium

Advanced Legal Topics: for those with several years' experience setting up collaborations and license deals with academia.

This masterclass will give an opportunity, to those involved as legal advisers in the field of TT, to discuss the more complex issues that arise in drafting, negotiating and subsequently living with deals around IP.

Palais des Congrès | Mosane 5 & 6

INFORMATION & HELPDESK

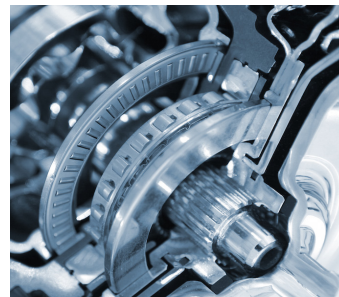
FIND TECHNOLOGIES THAT ARE AVAILABLE FOR LICENSING OR FOR OTHER BUSINESS OPPORTUNITIES

WHAT CAN THE HELPDESK DO FOR YOU?

The service aims at supporting EU and Japanese companies, universities, research centres and individuals in their steps to search for technologies and understand the mechanics of tech transfer transactions, as well as bridging the knowledge gap about current available technologies from both Japan and the EU.

The service is supported by a web portal <http://www.eu-jp-tthelpdesk.eu> which provides general content about intellectual property rights, technology transfer, and related topics between the EU and Japan.

Webinars, videos, and presentations are intended to make this new service a "must-see" for implementing open innovation practices within EU and Japanese companies.



THE SERVICE IS DEDICATED TO

- Japanese companies (with particular attention to SMEs), universities, and research institutions
- European companies (with particular attention to SMEs), universities, and research institutions
- Japanese and European individuals working for the above entities

SCOPE OF SERVICES

On the Helpdesk's website it will be possible to:

- Find available technologies from EU and Japanese universities and research centres
- Upload (for EU and Japanese universities and research centres), free-of-charge, available and promising technologies to find potential licencees or partners
- Find general information about IPRs and tech transfer practices
- Watch webinars with the relevant presentation materials
- Find video interviews with experts about about IPRs and tech transfer
- Read and download presentations and articles about IPRs and tech transfer

DO YOU HAVE A CUTTING EDGE TECHNOLOGY?

The Helpdesk is actively seeking for technologies from EU and Japanese universities and research centres to be freely displayed on the portal. For all those eligible and interested, feel free to look at the website.

MORE INFORMATION

www.eu-jp-tthelpdesk.eu

WEDNESDAY 23 MAY

13:30 - 15:30

MEMBERS ONLY

SPECIAL INTEREST GROUP MEETING (SIG)

SSHA SIG

Facilitator: Christoph Köller, Managing Director, Görgem & Köller GmbH, Germany

The ASTP-Proton Special Interest Group "Creating Value from Social Sciences, Humanities and the Arts" (SIG SSHA) was established in 2015 as a platform for face-to-face exchanges on SSHA among Knowledge Transfer Officers from universities and research organisations across Europe. During this meeting, we will update members on:

- Recent SIG workshops, (November 2017, Brussels, Financing SSHA Transfer Activities; May 2018, Oxford, Nurturing SSHA Start-ups);
- Forthcoming events, such as: (November 2018, Berlin Science Week);
- Forthcoming conferences, such as: (November 2018, Impact Conference, Vienna; February 2019, ACCOMPLISSH-conference, Barcelona)
- Recent projects and developments in SIG SSHA members' countries;
- New topic-specific SIG SSHA workshop.

Palais des Congrès | SSAH Mosane 9

Software SIG

Facilitator: Malcolm Bain, Partner, ID Law Partners, Spain

This Special Interested Group, was established in 2016 as a platform for face-to-face exchanges on software among Knowledge Transfer Officers. This SIG has developed 3 operational working groups; with Malcom Bain leading the software IP section; Mirko Lucas facilitating the understanding of commercial deals involving software; and Eva Riemann leading the dedicated legal group reviewing software deals.

Palais des Congrès | Software Mosane 4



EU-Japan Centre
for Industrial Cooperation
日欧産業協カセンター

HEAD OFFICE IN JAPAN

Shirokane-Takanawa Station Bldg. 4F
1-27-6, Shirokane, Minato-ku
Tokyo 1108-0072, Japan
T +81 3 6408 0281
F +81 3 6408 0283

OFFICE IN THE EU

Rue Marie de Bourgogne 52
B-1000 Brussels,
Belgium
T +32 2 282 00 40
F +32 2 282 00 45

www.eu-japan.eu - www.eubusinessinJapan.eu - office@eu-japan.eu

The EU-Japan Centre alone is responsible for the information contained in its communications or publications. Neither the European Commission nor the Government of Japan is responsible for any use that may be made of the information contained therein.



WEDNESDAY 23 MAY

13:30 - 16:00

| REGISTRATION REQUIRED

LIÈGE SCIENCE PARK: GUIDED TOUR

The main campus of the University of Liège and the university hospital are located within the Liège Science Park (LSP). Seated deep in the woods about 5 km from the city centre, they nestle alongside the business park and famous research centres such as: the GIGA Centre for Genomics, Liège Space Centre (CSL), Centre for Research in Metallurgy Group (CRM) and SIRRIS, the collective centre for and by the technological industry.

With some 160 companies as neighbours such as the renown Kaneka-Eurogentec, Siemens-Samtech, Physiol, EVS, BEA, Greisch, there are also 2 incubator companies: Walloon incubator of engineering sciences (WSL), and WBC who develops innovative, competitive and sustainable Life Sciences companies in Wallonia. LSP also hosts a medical Fablab.

The tour, will include a presentation of the LSP ecosystem, a visit to CSL's satellite testing facility and SIRRIS's materials centre.

A bus will collect participants at the Palais des Congrès and return in time to join the city tour.

Meeting point: Palais des Congrès



Liège Science Park



16:00 - 18:00

| REGISTRATION REQUIRED

LIÈGE CITY: GUIDED TOUR

Slip on your comfortable shoes for this two-hour walking tour of Liège. Setting off from the city centre, your tour guide shall lead you through the history of Liège from gothic cathedrals to art nouveau houses; past the birth place of novelist, Georges Simenon, and around the remains of the ancient citadel. You will discover the art and antiquity of the city and visit the hippest neighbourhood by strolling through Le Carré's labyrinth of bars and shop-lined streets. You will enjoy a view of the recently refurbished 16th-century Curtius museum and yards, rue Hors-Château, with its classified heritage sites and famous cul-de-sac, the Place du Marché, le Perron, and the City Hall. The tour will reach its climax when you arrive at La Violette, Liège Town Hall where you will join the conference welcome reception.

As time is limited during the guided tour, there will be no opportunities to access the museums.

Meeting Point: Liège Tourist Office | Quai de la Goffe 13, 4000 Liège

18:00 - 19:30

WELCOME RECEPTION

Sponsored by: **LifeArc**

Join the welcome to Liège from ASTP-Proton President, Henric Rhedin. Relax in the company of friends old and new, and network with your peers before the official opening of the conference.

Location: Town Hall La Violette | Place du Marche 2, 4000 Liège

19:30

| REGISTRATION REQUIRED

DIRECTORS' DINNER

Sponsored by: **Givaudan**

Moderator: Maria de Bettencourt Tavares, Head of Collaborative Innovation - Global Science and Technology, Givaudan, Switzerland

This event targets the most senior knowledge and tech transfer professionals. If you are a director of a TT office or a senior industrialist responsible for academic partnering and keen to connect with your peers from across Europe, join us for dinner and discussion.

Welcome on behalf of the Province of Liège by Deputy, André Denis.

Location: Palace of Prince Bishops | Place Saint-Lambert 18, 4000 Liège



THURSDAY 24 MAY

MORNING ACTIVITIES

8.15

REGISTRATION OPEN

Collect your badge from the ASTP-Proton desk. The desk shall be open through the event, so come along to meet the HQ staff and learn more about our events and services.

Grand Foyer

8.00 - 8.45

MORNING MEETING FOR NEW MEMBERS

Have you recently joined ASTP-Proton? Come along to this morning meeting to know more about the association. Share your ideas and expectations while getting to know the community and committee members.

Karen Laigaard,
Director, TTO University of
Copenhagen, Denmark |
Member, Programming
Committee, ASTP-Proton

Marc Legal,
CEO, OliSens, France |
Member, Programming
Committee, ASTP-Proton

Charles Rogier

A global full-service **Commercialisation** consultancy **Guiding Innovations To Market** for over 38 years. Providing **Market Research, IP Valuation, Technology Marketing, and Training** services.

Foresight
science & technology



“Guiding Innovations To Market”

Contact:

Alyssa Nacewicz

Director, Sales & Marketing

Sales@ForesightST.com

+1-401-273-4844 ext. 4004

www.ForesightST.com

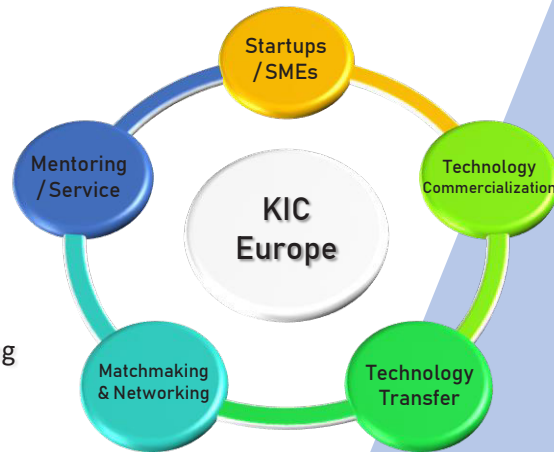


Creating tomorrow's Korean tech success stories with US!

- Innovation cooperation for Korean Startups and SMEs
- Technology Commercialization : Technology transfer, Licensing, Joint ventures
- Innovation-based incubation services for early stage companies
- Matchmaking fostering cross-border collaboration
- Partnerships and monitoring EU policies and market trends

We are here to...

- ▶ help Korean Startups & SMEs to set their eyes on the global market from the initial ideation stage.
- ▶ support local networking, information analysis and mentoring services



We are bridging the collaboration between Korea & Europe

Charlottenstraße 18, 10117 Berlin | GERMANY
+49 (0)30 3551 2840
info@kiceurope.eu

OPENING SESSION

9.00 - 10.30

OPENING PLENARY & KEYNOTE

Reine Elisabeth

Welcome to Liège: Henric Rhedin, President of ASTP-Proton

Welcome from representative of hosting sponsor, LIEU Network, Belgium
Introduction by Michel Morant, President of LIEU Network, Belgium

The Research and Innovation Landscape in Belgium

Moderator: Michel Morant, President of LIEU Network, Belgium

Speakers: Vincent Blondel, Rector, Catholic University of Louvain | President, Conference of Rectors (CReF), Belgium

Vincent Reuter, Expert Adviser to Walloon Government | Former CEO, Union of Walloon Enterprises, Belgium

Belgium has been a country of high learning and industrial aptitude since the Middle Ages. Today, this small nation is a European leader in research and development and renowned for its world-class universities such as KU Leuven and the University of Liège. The economic impact of the cooperation between the academia and the research and development industry is well-recognised and contributes to 2.5% of the national GDP; 2.9% of the regional GDP of Wallonia.

Keynote

Innovation: it's not what it used to be

Speaker: William Fischer, Professor of Technology Management, International Institute for Management Development (IMD), Switzerland

Prof. Fischer co-founded and co-directs the IMD programme on Driving Strategic Innovation, in cooperation with the Sloan School of Management at MIT and authors a regular column for Forbes.com entitled 'The Ideas Business'. In this session, we will learn how the industry boundaries are blurring, the traditional innovation funnel is becoming obsolete, and what the implications are for management, organisations and leadership.

10.30 - 11.00 COFFEE BREAK | GRAND FOYER



FIRST PARALLEL SESSION

11.00 - 12.30

Track 1: Engagement with Academic Institutions

OPTIONS FOR TECHNOLOGY TRANSFER POLICY IN EU CONTEXT

Moderator: **Mattias Dinnetz**, Programme Manager, Intellectual Property and Technology Transfer, Joint Research Centre, European Commission, Belgium

Speakers:
Axel Ferrazzini, Managing Director, 4iP Council, Belgium

Laura Kreiling, PhD candidate, University Paris-Sud, France

This session focuses on how operational knowledge on TT can be coupled with academic research to assist in the improvement of policy measures. Subtopics include evolution in IP-based business models, benchmarking efforts, the need for capacity building, and internationalisation.

The central thesis of the session is that well-designed cross-disciplinary research can help unravel TT intricacies, and results can subsequently be conveyed to the policy making/implementation level in the form of well-argued recommendations.

Reine Elisabeth

Track 2: Engagement with Young Companies

FROM TECH TRANSFER TO SPIN-OUT FOUNDER

Moderator:
Marc Legal, CEO, OliSens, France

Speakers:
Vincent Menny, CEO, Authentic Material, France

Ewout Vansteenkiste, Co-Founder, Molecubes, Belgium

Gilles Capart, Founder and Managing Director, AuXin Surgery SA, Belgium

Many technology transfer officers become embedded in the process of spinning out new companies. Some staff even follow the urge to leave the TTO and embark on a new career as an entrepreneur. This session learns from parties who have made this journey.

Mosane 5 & 6

Track 3: Engagement with Established Industry

TRIPLE HELIX PARTNERSHIPS FOSTERING INNOVATION

Moderator: **Michel Morant**, President of LIEU Network, Belgium

Speakers:
Patrick Di Stefano, Head of WG Biotech, ULB TTO | LIEU Network, Belgium

Wim Van Camp, Head of TTO-Flanders, University of Ghent, Belgium

Vincent Lamande, CEO, SATT Ouest-Valorisation, France

Alexandros Papaderos, Deputy Head of the office for Research and Innovation, Head of Patents and Licenses, TUM, Germany

The triple helix model (academia, industry, government) can be a key factor to facilitate university-industry interactions. This session shall give examples of systems to foster these partnerships. We shall hear from Belgium, about measures to foster cooperation; from France, about 'Common Laboratories'; and from Germany, about schemes for collaborative research.

Charles Rogier



KNOWLEDGE STOCK EXCHANGE

INCLUDING

FACE-TO-FACE MEETINGS | GRAND FOYER

13.30 - 15.00

MARKETPLACE **Moderator:**

Steven Tan, CEO, Nascent Ventures B.V., the Netherlands

13.30 - 13.45 | **Patent Information and Technology Transfer**

Michel Caldana, Director, Picarré, Belgium

“Patent databases are well known sources of technical and legal information commonly used in prior art searches, freedom-to-operate searches, etc. Their business content can also be advantageously exploited particularly in patent mappings to help the tech transfer specialists to identify potential licensees, business or research partners. Combined with economic, financial or more generally contextual data, patent mappings are a powerful tool for taking efficient business decisions. With experience in patent information Picarré IP counsels help the Wallonia tech transfer offices during EU and regional calls for projects and in the process of spin-off creation.”



www.epo.org

13.45 - 14.00 | **5 Key Reasons to use Ximbio for Commercialising Research Reagents**

Isobel Atkin, Senior Portfolio Manager, Ximbio, UK

“Research reagents, such as antibodies, mice, and cell lines are the cornerstones of basic scientific research; Ximbio is a marketplace for scientists to maximise commercial opportunities for these tools. Tech Transfer Offices are opting to work with Ximbio, recognising its commercial reach and ability to secure physical material.”



www.ximbio.com

14.00 - 14.15 | **Opportunities for EU Universities to Reach out to Japanese Partners and Potential Licensees**

Luca Escoffier, Project Manager, EU-Japan Technology Transfer Helpdesk, Japan

“In this talk, the Project Manager of the EU-Japan Centre for Industrial Cooperation in Tokyo, will introduce the audience to the EU-Japan Technology Transfer Helpdesk. The services of the Helpdesk aim at supporting EU and Japanese companies, universities, research centres and individuals in their steps to search for technologies and to understand the mechanics of tech transfer transactions, as well as the knowledge gap about current available technologies from both Japan and the EU. From this talk, it will emerge that TTOs from the EU have many opportunities to interact with the Helpdesk by participating in podcasts and webinars, posting their available technologies on the Helpdesk’s site, and getting actively involved searching for technologies received by the Helpdesk from Japanese companies.”



www.eu-japan.eu

MARKETPLACE

Reine Elisabeth

14.15 - 14.30 | **NLC | The Healthtech Venture Builder**

Alain Kummer, Director Scouting & Medical Affairs, NLC, the Netherlands



“NLC is the European healthtech venture builder, bringing science-based healthtech inventions to life. Due to market complexities at least 95% of healthtech inventions never reach the patient and the market, regardless of their relevance or brilliance. At NLC, we don’t accept this status quo. We call this opportunity, by bringing together the best tech, the best people, and the best capital to build life-changing healthtech ventures. We have designed a bold model to create early stage healthtech innovation. We step in when inventors need us most. We can step in because our model and mission are fully aligned to bring science to life. Our multilingual team is able to speak the languages of the many different silos. We build healthtech ventures, together with leading european research institutes, top-notch hospitals, TTO’s, entrepreneurs and global market leaders. Together, we fulfil our mission to bring science to life.”

www.nlc.nl

14.30 - 14.45 | **LifeArc**

Angela Miller, Senior Business Manager, LifeArc, UK

“LifeArc is a medical research charity with a 25-year legacy of helping scientists and organisations turn their research into treatments and diagnostics for patients. LifeArc pioneers new ways to turn great science into greater patient impact. It brings together a network of partners to tackle specific diseases and directly funds academic and early stage research. So far, LifeArc’s work has helped to develop four drugs (Keytruda®, Actemra®, Tysabri® and Entyvio®) and a test for antimicrobial resistance.”



www.lifearc.org

14.45 - 15.00 | **Golden Tips for IP Protection for Universities and Start-ups**

Eva Eulaers, Dutch Patent Attorney, V.O., the Netherlands
Annemie Swinnen, European Patent Attorney, V.O., the Netherlands



“Golden tips for IP protection for universities and start-ups. Knowledge and technology transfer centres play a key role in the valorization of research generated by universities or research institutes. Patents are a valuable instrument in protecting the potential market value of that research. V.O. Patents and Trademarks has a long-standing experience in accompanying universities and start-ups active in a broad range of technology and science in taking the right decisions with respect to the protection, exploitation and management of their IP, including IP issues in collaboration with third parties.”

www.vo.eu

15.00 - 15.30 COFFEE BREAK | GRAND FOYER

FACE-TO-FACE MEETINGS | GRAND FOYER



KNOWLEDGE STOCK EXCHANGE

INCLUDING

FACE-TO-FACE MEETINGS | GRAND FOYER

13.30 - 15.00

INITIATIVE SHARING

Moderator: **Marc Legal**, CEO, OliSens, France

13.30 - 13.45 | **Valued the Unvalued**

Jean-Claude Sabourin, Business Strategy Analyst, Univalor-Montreal, Canada

“Researchers are developing a huge quantity of tools (case studies, training kits, guides, reports, market studies, apps, protocols, software, calculators, etc.) that are difficult to valorize via usual means (patents and licensing). As a TTO organisation, we have created a spin-off that offers a platform to promote and valorize these tools. Many Public Research Organisation and TTOs from North America, Europe and Africa are already using it.”

www.univalor.ca

13.45 - 14.00 | **IP Training in an Innovative Way: get participants playful and active**

Elodie Naveau, Knowledge Transfer Officer - IP Management, ULiege - Interface Entreprises, Belgium

“Raising awareness of IP among researchers is a common issue for KTOs. After several years presenting slides to students who sat and passively listening, I decided to revise the course and get the audience more active. This initiative took place after a one-day introduction to the THIAGI method organised by our university. The THIAGI method allows us to deliver training playfully. Participants are invited to stand up, question their neighbours, make summaries, engage and interact with fellow students. The methods have been used in two sessions on IP rights and knowledge transfer. In this presentation, I shall share student appreciation as well as the preparative work needed to make it a success.”

www.recherche.uliege.be

14.00 - 14.15 | **“What’s Next?” the new look Fall Meeting...**

Laura MacDonald, General Manager, ASTP-Proton, the Netherlands

Alex Mouret, Director, Brave New World | PR Luris | Director LIFF, the Netherlands

“This year’s Fall Meeting will be in Leiden on 7th and 8th November, with a new programme style reinforcing the philosophy of the Fall Meeting - driven by the members, seeking ways to learn even more about the world of innovation. On 8th and 9th November our neighbour in Leiden will be Brave New World - an international conference for people who want to know what the future holds and how this will affect their life, business, and policy. With the opportunity for great cross-over plenary speakers, the programme is being developed with co-operative learning in mind, including some sessions which will be interesting for both audiences. For the ASTP-Proton community, our days will be dedicated to masterclasses, workshops, a hub space dedicated to SSHA, and access to Brave New World which will be exploring themes such as Trust in Technology.”

www.astp-proton.eu
www.bravenewworld.nl

INITIATIVE SHARING

Charles Rogier

14.15 - 14.30 | **Crossing the Chasm...in technology commercialisation. Proof of Concept funding at Polytechnic University of Turin, Italy**

Shiva Loccisano, Head of Technology Transfer and Industrial Liaison Department, Polytechnic University of Turin, Italy

“The so-called ‘valley of the dead’ for technology is represented by the market failure phase that comes in the ‘late research stages’, with TRL (Technology Readiness Level) ranging from 3-4 to 5-6, depending on the specific sectors.

Borrowing a concept from the world of economics, we will talk about how to ‘cross the chasm’ represented by this critical step in technology development. We will share with colleagues a ‘gap funding initiative’ we set up at our university.”

www.polito.it

14.30 - 14.45 | **A Readiness Level Scales-Based Tool to Support the Collaboration Management of the Knowledge Transfer Process**

Olivier Gillieaux, Senior Tech Transfer Officer, ULiège - Interface Entreprises, Belgium

“Knowledge transfer is an innovation process that requires close attention be paid to three vital elements: the technology, the application/market, and the resources: human, material, and financial. As the process is collaborative, it is impossible to find one person with all the required skills. Therefore, to make the approach efficient, it is important that all partners share the same views. This is the goal of the excel sheet tool. Based on the TRL and the CRL (scales inspired by the design-thinking approach and the Minimum Viable Product strategy), the tool determines the TRL level and the CRL level of the project by the proposing seven questions. The graphics generated by the tool give an overview that can be shared by the partners and offers an opportunity for all partners to prepare for the next stage. By using examples, we will demonstrate how this tool can be used to support the knowledge transfer process.”

www.recherche.uliege.be

14.45 - 15.00 | **Stimulating Student Entrepreneurship**

Wim Fyen, Investment Manager, KU Leuven R&D | Co-Founder, Lcie (Leuven Community for Innovation driven Entrepreneurship), Belgium

“In this presentation, we shall share our experiences, from previous years of being involved in the stimulation of student entrepreneurship at KU Leuven from within the Technology Transfer Office. The way we have approached this topic is by building a university-wide community of people driven towards innovation and entrepreneurialism, including students, staff and academics.”

www.lcie.be

15.00 - 15.30 COFFEE BREAK | GRAND FOYER

FACE-TO-FACE MEETINGS | GRAND FOYER



KNOWLEDGE STOCK EXCHANGE

INCLUDING

FACE-TO-FACE MEETINGS | GRAND FOYER

13.30 - 15.00

ECOSYSTEM INSIGHTS

Moderator: Christophe Haunold, Deputy General Manager, Toulouse Tech Transfer, France

13.30 - 13.45 | The Components Research Cycle

Anna Groeninx van Zoelen, Treasurer, EARMA (European Association of Research Managers and Administrators), the Netherlands

“The focus of this presentation will be on the components research cycle and how we as Research Managers and Administrators (RMA) deal with that. It will also show how the research cycle becomes more diverse due to compliance issues: such as ethics and impact: this calls for collaboration with other experts.”

www.earmaconference.com

13.45 - 14.00 | Intangible Assets

Ludo Pyis, Founder and President, Areopa Group, Belgium

“The intangible assets created through the processes of innovation represents a major share of the value of today’s business. There is a clear need to increase market actors’ confidence and certainty in IP valuation methods as a way to stimulate IP transactions, to support IP based financing and to give companies the tools to provide information about their IP. Ludo will showcase relevant valuation methodologies.”

www.areopa.com

14.00 - 14.15 | A Deeper Understanding of the Invention Process and IP benefits: industry and university collaborations

Axel Ferrazzini, Managing Director, 4iP Council, Belgium

“The 4iP Council is a European research council dedicated to developing high quality, third party academic insight and empirical evidence on the complex correlation between investment, invention, innovation, employment and social and economic success. Our research is multi-industry, cross sector and technology focused. We work with academia, policy makers and regulators to facilitate a deeper understanding of the invention process and intellectual property benefits. We will provide an overview of 4iP Council research findings and explore collaborations with attendees on 4iP Council’s university research initiatives.”

www.4ipcouncil.com

ECOSYSTEM INSIGHTS

Mosane 5&6

14.15 - 14.30 | Offering for Sell or License IP Rights and/or Technologies by Academia: a view from the buyer side

François Drapeau-Paquin, Senior Intellectual Property Counsel, Philips, the Netherlands

“During this session, we will briefly go through (a) Philips’ assessment process with regard to externally generated IP rights and technologies, (b) what is expected from the IP owners to support such assessment and (c) how an IP owner should package information, to improve the likelihood of transfer; we will conclude by looking at examples of what falls currently in Philips’ areas of interest.”

www.ip.philips.com

14.30 - 14.45 | Impact2Research

Bruno Woeran, EU- Affairs Manager, Merinova Technology Center, Finland

“Adding commercialising thoughts very early to the proposal preparation process. TII’s commercialisation expert database and ASTP-PROTON’s joint efforts in collaboration for members – trainings, summer schools, China experience.”

www.tii.org

14.45 - 15.00 | Wagralim

François Heroufousse, General Director, Wagralim, Belgium

“Wagralim is the Agro-Food Cluster in Wallonia, active since 2006. We count over 160 members from industry, academia and training centers. The Cluster is specialized in the set up of collaborative projects in Nutrition, Industrial Efficiency and Sustainability including international partners. In 2016 Wagralim joined the Universities to launch Keyfood, acting as a technological platform for the agro-food industry. Keyfood allows industries to collaborate with academia. In order to get access to targeted scientific expertise: analytical trials, product and process development, provision of equipments, prototypes...”

www.wagralim.be
www.keyfood.be



SECOND PARALLEL SESSION

15.30 - 17.00

Track 1: Engagement with Academic Institutions

NEW MODELS FOR STRATEGIC PARTNERSHIPS

Moderator: Paul Van Dun, General Manager, KU Leuven Research and Development, Belgium

Speakers:
Mikkel Skovborg, Senior Officer, Novo Nordisk Foundation, Denmark

John Mackenzie, CEO, Roslin Innovation Centre, UK

The complicated business of knowledge transfer offices often increases when the research organisation develops set-ups internally or establishes more sophisticated partnerships with external stakeholders. Questions which arise about the division of roles, intellectual property, dual employment, and external partners on campus can give TTOs grey hair while adding tremendous value to the research organisation, or the local economy. This session will illuminate the challenges faced by TTOs and discuss how they can continue to support the creation and maintenance of such relationships while navigating a constantly-developing ecosystem.

Reine Elisabeth

Track 2: Engagement with Young Companies

SERVING START-UPS BETTER WITH EXPRESS LICENSING

Moderator:
Ulrich Mahr, Member General Management, Max Planck Innovation, Germany

Speakers:
Anja Zimmermann, Equity Management & Valuation, Ascenion GmbH, Germany

Tony Hickson, Managing Director, Imperial Innovations Ltd, UK

Supporting start-ups is a core competence of nearly every technology transfer office. Part of that process is to grant access for the newco to the core technologies and connected intellectual property. This can often turn out to be a large and complex field, with ample potential for conflict. Express licensing may be one way to resolve this efficiently.

Mosane 5 & 6

Track 3: Engagement with Established Industry

DOING BUSINESS WITH CHINA: HOW AND WHEN?

Moderator: Nedeljko Milosavljevic, Director, Centre for Technology Transfer, University of Belgrade, Serbia

Speakers:
John Zhang, Secretary General, International Technology Transfer Network, China

Hui Wu, Founder and CEO, International Co-Innovation Center for Advanced Medical Technology, China

Zhi Zhang, Business Development Manager, Lifearc, UK

While many universities and their knowledge transfer offices are still considering how and when to work with Chinese partners, industry has already created close and successful connections there. China's improved IP laws and practices present a new and accessible landscape filled with opportunities. Our speakers will discuss the advantages and the best approaches to doing business in China and demonstrate how TTOs can realise the potential for universities and themselves there.

Charles Rogier

THURSDAY 24 MAY



17.00 - 18.00

GENERAL ASSEMBLY

ASTP-PROTON MEMBERS ONLY

ASTP-Proton members are invited to take part in this meeting to hear the latest news, how to get involved, and to discuss future plans for the association.



Reine Elisabeth

LIEU

LIAISON ENTREPRISES-UNIVERSITÉS

KNOWLEDGE TRANSFER NETWORK
OF THE « FÉDÉRATION WALLONIE-BRUXELLES » UNIVERSITIES

Since 2003, the Belgian French-speaking KTOs have been working together as part of the LIEU Network.

By cooperating in this way, they are able to:

- > consolidate the range of academic services available to external partners (businesses and other organisations);
- > manage multi-university projects and screen valuable results;
- > provide businesses with easier access to the facilities and skills on offer at over 1000 research centres.

2017 RESULTS - 6 KTOs IN FIGURES



www.reseaulieu.be



Supported by :



Let's talk:

Assets for licensing

Diagnostics development

Drug discovery

Technology transfer

Our work has already led to the launch of 4 drugs - including Keytruda®

We're the charity turning great science into greater patient impact

lifearc.org

18.30

CONFERENCE DINNER

Location: Museum of Walloon Life | Rue des Mineurs, 4000 Liège

Conference participants are invited to an evening of good food, music and networking in the cloisters of a former Franciscan monastery in the historical heart of Liège. Currently home to the Museum of Walloon Life, guests will be treated to an evening of local gastronomy from organic and sustainable food suppliers in the area.

The evening will commence with a walking apéritif when you can network with other guests and enjoy an exclusive viewing of the temporary exhibition *Regards sur le Cirque Divers à Liège*. The main course will be served in a bespoke marquee constructed in the beautiful courtyard of the former monastery, where live music will entertain us while we eat.

Located in the heart of Liège, the venue is close to a Place du Marché, renowned for its night life, should you wish to continue the celebrations once dinner is over.

Sponsored by:





MORNING ACTIVITY

7.00



MORNING RUN

If you like kick-starting your day the healthy way, join your fellow guests at 7.00am for this 5-kilometre circuit.

Meeting point: Front entrance, Liège-Guillemins train station

9.00 - 10.30

PLENARY SESSION

Reine Elisabeth

The Future's Bright: the year ahead for ASTP-Proton

As the association approaches its 20th year, President Henric Rhedin will shine a light on the future ambitions of ASTP-Proton and outline the opportunities for the conference community to help build the association into a resilient and flexible champion for the benefit of the association, the sector and society as a whole.

Plenary Panel: Proof of Concept Funding for Innovations

Introduction: **Giancarlo Caratti**, Head of Unit, Intellectual Property and Technology Transfer, Joint Research Centre, European Commission, Belgium

Jerome Samson, Investment Manager, European Investment Fund, Luxembourg

Moderator: **Marta Catarino**, Director of Technology Transfer Office, University of Minho, Portugal

Panel

Javier Echarri, CEO, Europe Business Network, Belgium

Lidia Borrell-Damian, Director of Research and Innovation, European University Association, Belgium

Philippe Vanrie, Secretary General, EUREKA, Belgium

Claire Munck, CEO, Be Angels | Board Member, Business Angels Europe, Belgium

Henric Rhedin, President of ASTP-Proton

Today, proof of concept (POC) is a key deliverable when seeking an industrial partner to develop a technology, yet POC is not typically included in the work plan of academic researchers. Resolving this credibility gap requires a definitive approach, and specific funding can be carried out by academic laboratories between TRL 3 and 4 with external support. The EU and EIF offer specific POC funding while universities, KTOs and innovation partners (incubators, EEICenters, and early-stage investors) can be involved at a local level. Is there an advantage to a global approach to strengthen local networks and better facilitate the management and funding of POC?

The session shall offer insights and discuss opportunities to strengthen the cooperation between academic research and product development.

10.30 - 11.00 COFFEE BREAK | GRAND FOYER

FACE-TO-FACE MEETINGS | GRAND FOYER



THIRD PARALLEL SESSION 11.00 - 12.30

Track 1:
Engagement with Academic Institutions

Track 2:
Engagement with Young Companies

Track 3:
Engagement with Established Industry

CONFLICTS OF INTEREST

Moderator: **Stefan Lux**, Patent and Licensing Manager, ETH Zürich, Switzerland

Speakers:
Mette Andrup, Senior Legal Adviser, University of Copenhagen, Denmark

Marie-France Dumas-Ladouce, Intellectual Property and Licensing Manager, CNRS, France

Conflicts of interest can occur in many ways but how do academic institutions deal with it? In this session, we will focus on different examples of managing conflicts of interest in academic institutions. Despite having discussed this subject in the past, it is always relevant as it continues to cause headaches for all those concerned with partnerships, spin-outs and other collaborative relationships.

Reine Elisabeth

STUDENT ENTREPRENEURSHIP: THE PROS AND CONS

Moderator:
John Mackenzie, CEO, Roslin Innovation Centre, UK

Speakers:
Bernard Surlemont, Professor in Entrepreneurship, ULiège, Belgium

Anders Aune, Innovation Manager, NTNU TTO AS, Trondheim, Norway

The involvement of the TTO in student entrepreneurship varies greatly from institution to institution. Some TTOs have a hands-off approach rarely engaging with students, while other TTOs embrace this huge resource in a very pro-active way. This session will explore the pros and cons of each approach. Does student entrepreneurship enhance or endanger the TTO's mission?

Mosane 5 & 6

THE UNEXPECTED PARTNER

Moderator: **Ruth Herzog**, Head of TTO, DKFZ, Germany

Speakers:
Sabine Wögrath, IPR Adviser, University of Innsbruck, Austria

Henriette Fenger Grønfeldt, Legal Adviser, University of Copenhagen, Denmark

One of the most challenging tasks for tech transfer managers is to find the right licensee; we often work to convince the usual suspects to look at our technology offer. However, there are so many potential partners out there, so why not work with them?

This session will highlight some successful collaborations with unexpected partners and develop ideas on how to reach them.

Charles Rogier



FOURTH PARALLEL SESSION 13.30 - 15.00

Track 1: Engagement with Academic Institutions	Track 2: Engagement with Young Companies	Track 3: Engagement with Established Industry
<p>LEARNING FROM TECH TRANSFER SUCCESSES IN ISRAEL</p> <p>Moderator: Massimiliano Granieri, Professor of Comparative Private Law, University of Brescia, Italy</p> <p>Speakers: Yaron Daniely, CEO and President, Yissum, Israel</p> <p>Nadav Berger, Founding and Managing Partner, Peak Bridge Partners, Malta</p> <p>Israel has become a high-tech start-up powerhouse and home to leading-edge innovation industries. In this session, we will address the key success factors, from technology transfer organisations, to small and large enterprises as well as venture capital that have been at the foundation of unique ecosystem which is driving commercial success.</p> <p>Reine Elisabeth</p>	<p>MANAGING PATENT PORTFOLIOS</p> <p>Managing IP and especially patents are essential for early technology. It is challenging for both academic centres as well as young SMEs. This session will provide some insights on current hot topics, including: the CRISPR patent landscape; evolving plausibility and data requirements before the EPO; IP challenges for antibodies and immunotherapy; tips for drafting robust patents; and the latest on software patenting.</p> <p>Moderator: Koen Verhoef, Director of TTO, Cancer Institute - Antoni van Leeuwenhoek Hospital (NKI-AVL), the Netherlands</p> <p>Speakers: Richard Gibbs, Managing Partner, Marks & Clerk, UK</p> <p>Steven Gurney, Principal Associate, Marks & Clerk Cambridge, UK</p> <p>Mosane 5 & 6</p>	<p>LICENSING: GETTING THE BEST FOR BOTH WORLDS; TTOS AND INDUSTRY</p> <p>Moderator: Jeff Skinner, Executive Director, Institute of Innovation and Entrepreneurship, London Business School, UK</p> <p>Speakers: Julie Edwards, Contract Negotiator and Alliance Manager, Boehringer Ingelheim, Germany</p> <p>Ajay Jagtiani, Principal, Miles and Stockbridge P.C., USA</p> <p>The licensing business can be characterised by mutual mistrust between the academic licensor and industry licensee. Universities often feel like the underdog, while industry can be viewed as arrogant: a challenging situation for any negotiation. This session will open discussion around these thorny issues, with many examples showing how successful deals can be done.</p> <p>Charles Rogier</p>



FRIDAY 25 MAY

FINAL PLENARY SESSION

15.15 - 16.15

KEYNOTE PRESENTATION

INNOVATION IN CHOCOLATE

Speaker: Erich J. Windhab, Head of the Laboratory of Food Process Engineering, ETH Zürich, Switzerland

Cacao has been cultivated by many cultures for at least three millennia but chocolate, the delicious sweet treat in which we love to indulge, continues to be the focus of scientific research and collaboration.

This popular confection is coded by a complex, hierarchically organised multi-scale product structure which has been empirically developed over the past 100 years. Optimisation requires scientific understanding and quantification of these process-structure-property relationships.

The role of collaboration and knowledge transfer is the other secret ingredient of chocolate's success and our keynote speaker will share insights on the knowledge transfer methodology and implementation steps; from the fundamental science to industrial production.

Sponsored by:



Reine Elisabeth



+44 (0)1638 720050

jeremykirkpatrick@myipweb.co.uk

www.myipweb.co.uk



myIP Web

Online IP management and commercialisation



Inventor Portal

Online access for researchers



Sharing Framework

Online collaboration

Welcome to myIP

Intellectual Property Asset Management

Get in touch today to request a demo!

THANK YOU

The LIEU Network has been an invaluable partner in the organisation of this conference and the committees and staff of ASTP-Proton would like to thank them sincerely for all their hard work and support.

A very special thank you goes to Michel Morant, a long time and loyal member of ASTP-Proton, he has worked tirelessly and with great humour to help deliver this event and we greatly appreciate all his efforts over the last year.

Thanks too goes out to our Programming Committee who have pulled together this line-up of great speakers and innovative topics for our pleasure and learning. They work throughout the year on a voluntary basis to design great programmes for the Annual Conference and Fall Meeting their dedication and support is massively valuable to the smooth running of these international events.

Fundamentally, ASTP-Proton is your association: for the members, by the members. There are lots of exciting opportunities for the membership to get involved, so if you have a special interest or talent you would like to contribute, get in touch, we have a place for you.

Laura MacDonald
General Manager
ASTP-Proton

Michel Morant



President
.....
President of LIEU Network, Belgium

Alexia Louchet



Marketing and Communication
.....
ULiège - Interface Entreprises, Belgium

Sibylle Rocher-Barrat



Communication Advisor
.....
Communication Advisor, Department of Research, Technology Transfer Office, ULiège - Interface Entreprises, Belgium

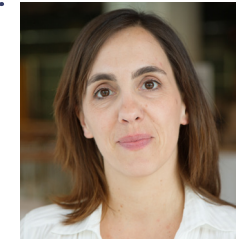
VOLUNTEERS BOARD MEMBERS

Henric Rhedin



President
.....
PhD, Institute for Innovation and Social Change, School of Business, Economics and Law, University of Gothenburg, Sweden

Marta Catarino



Immediate Past President
.....
Director, TecMinho University of Minho, Portugal

Andrew Carlin



VP NAAC
.....
Chief Executive, North West European Region, EIT Food, UK

Christophe Haunold



VP Business Development
.....
Deputy General Manager, Toulouse Tech Transfer, France

Ulrich Mahr



VP Survey & Impact
.....
Member General Management, Max Planck Innovation, Germany

Nedeljko Milosavljevic



VP Marketing & Communications
.....
Director, Centre for Technology Transfer, University of Belgrade, Serbia



VOLUNTEERS BOARD MEMBERS

Steven Tan



VP Finance & External Relations

CEO, Nascent Ventures, the Netherlands

Maria de Bettencourt Tavares



VP Programming

Head of Collaborative Innovation – Global Science and Technology, Givaudan, Switzerland

Amanda Zeffman



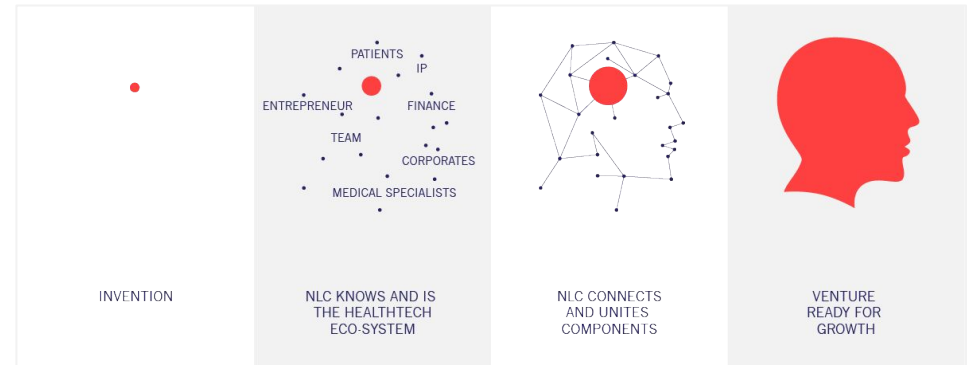
VP Professional Development

Head of Consultancy Services, Cambridge Enterprise Limited, UK



WE BRING SCIENCE TO LIFE

95% of all patents are ‘dormant’, meaning that they are never turned into a commercialized product, never bring in any revenue, and never reach the patient. Especially at academic research institutes, the transition rate from patented inventions into spin-offs is low. Knowledge institutes are primarily focused on research and education, causing valorisation efforts to lag behind. **NLC bridges this gap, ensuring successful commercialisations of science-based healthtech inventions**



WE BELIEVE IN STRONG PARTNERSHIPS

Because nobody can bring science to life on their own, we believe in the power of collaboration. We partner with leading European research institutes, first class hospitals and corporates to build impactful healthtech ventures. A selection:



Join us in our mission to bring Science to Life.
Contact: Nina Rijnders - nina.rijnders@nlc.health

Discover how Puratos can help develop your bakery, patisserie and chocolate business



We can help you to differentiate with an extensive range of great freshly baked breads, cakes, desserts and chocolate – all based on a selection of highly versatile and convenient ingredients.

Connect with our local teams by visiting www.puratos.com/contact-us to discover how you can make the most of our expertise.

Puratos.
Reliable partners in innovation



VOLUNTEERS PROGRAMMING COMMITTEE

Maria de Bettencourt Tavares



Chair of Committee

Head of Collaborative Innovation - Global Science and Technology, Givaudan, Switzerland

Karen Laigaard



Member

Director, TTO University of Copenhagen, Denmark

Marc Legal



Member

President/CEO, OliSens, France

Sara Matt-Leubner



Member

Head of Transfercenter, University of Innsbruck, Austria

Silke Meyns



Member

Head of Patents and Licensing, ETH Transfer, Switzerland

Christian Stein



Member

CEO, Ascenion GmbH, Germany

VOLUNTEERS

PROFESSIONAL DEVELOPMENT COMMITTEE

Amanda Zeffmann



VP Professional Development & Chair

Head of Consultancy Services, Cambridge Enterprise Limited, UK

Wim Bens



Member

CEO, UM Holding, the Netherlands

Bernard Denis



Member

EU Relations Officer & Project Support, CERN, Switzerland

Tom Flanagan



Member

Director of Enterprise and Commercialisation, UCD Research and Innovation, Ireland

Catarina Maia



Member

Head of Technology Licensing, INESC TEC, Portugal

Martin Raditsch



Member

CEO, Innovectis GmbH, Germany

Jeff Skinner



Member

Executive Director, Institute of Innovation & Entrepreneurship, London Business School, UK

Anja Zimmermann



Member

Equity Management and Valuation, Ascenion GmbH, Germany

HEADQUARTERS

STAFF

Laura MacDonald

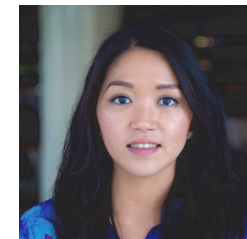


General Manager

laura.macdonald@astp-proton.eu

+31 (0)6 15 406 660

Arlyta Wibowo

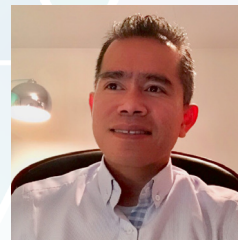


Business Developer

arlyta.wibowo@astp-proton.eu

+31 (0)6 31 620 541

Anuar Shafiei



Event Coordinator

anuar.shafiei@astp-proton.eu

+31 (0)6 15 410 777

Noeleen O'Hara



Communications Manager

noeleen.ohara@astp-proton.eu

+31 (0)6 39 148 404

Bregje van Bommel



**HQ Secretary
Coordinator**

.....
bregje.vanbommel@
astp-proton.eu

Monique Beuk



**Financial
Administrator**

.....
finance@astp-proton.eu

Valerie van der Ham



Event Assistant

.....
headquarters@
astp-proton.eu

Luna Tan



**Communications
Assistant**

.....
communications@
astp-proton.eu

Tamar Endeman



Event Assistant

.....
headquarters@
astp-proton.eu

Wai Lam Tsui



**Communications
Assistant**

.....
assistant@
astp-proton.eu



58



59

SPONSORS' DIRECTORY



www.reseaulieu.be/

Booth: 7

contact@reseaulieu.be

+32(0) 81622594

LIEU Network

The LIEU Network connects Knowledge Transfer Offices (KTOs) belonging to Universities and Higher Education Institutions in the Fédération Wallonie-Bruxelles.

The Belgian French-speaking KTOs are designed to stimulate and facilitate cooperation between the different stakeholders in scientific services, collaborative research, and knowledge transfer. Since 2003, they have been working together as part of the LIEU Network. By cooperating in this way, they are able to:

- consolidate the range of academic services available to external partners (businesses and other organisations);
- manage multi-university projects and screen valuable results;
- provide businesses with easier access to the facilities and skills on offer at over 1000 research centres.

The LIEU Network is the direct responsibility of the Conseil des Recteurs des Universités Francophones de Belgique (CReF), a council of university Deans from French-speaking Belgium. The Network makes use of the various coordinating bodies, and calls upon the full strength of the KTO advisors: a team of over 60 Business/Research partnership professionals.

The work carried out by the KTOs is organised into different working groups dedicated to professional sectors: Agri-food industry, Energy and the Environment, Biotech & Life Sciences, Materials, Digital technologies and Social Sciences and Humanities.



www.ascenion.de

info@ascenion.de

Ascenion GmbH

Ascenion is a technology transfer partner with particular expertise in the life sciences.

We advise and support 27 academic research institutions and affiliated organizations across Germany and Europe with regard to the protection and commercialization of their intellectual property and initiate and mediate license agreements between research institutions and industry. Since foundation in 2001 we closed 900 revenue-carrying agreements for our partners from which they received revenues of more than 85 Mio. Euros. We place particular emphasis on coaching company founders and on active equity management.

Ascenion currently markets over 700 technologies, has coached more than 100 spin-off projects and holds equity in 23 of these companies.

Ascenion's headquarters is in Munich, with other offices across Germany.



birdbelgium.com

Valérie Debois
bird@birdbelgium.com

+32(0) 478358311

Belgium industrial R&D Association (BiR&D)

Belgian Industrial Research & Development (BiR&D) is an association of 26 industrial multinational companies with major R&D activities in Belgium: 3M, AB Inbev, AGC, Atlas Copco, Baxter, Bekaert, Cargill, Carmeuse, CMI, Coca-Cola, Deme, Engie, Etex, GSK, Janssen Pharma, Lhoist, Magotteaux, Nokia, Ocas, P&G, Puratos, Recticel, Solvay, Total, UCB, Umicore. Agoria, essenscia and GRD are associated members.

Together, our members represent 10.000 direct FTE's in R&D in Belgium. This figure doesn't take into account the multiplier effect of the collaborations with universities, research centres and other actors.

BiR&D's mission is to stimulate and improve both the attractiveness and the effectiveness of industrial R&D in Belgium.



A novel technology for radiation therapy is one thing.

Another thing is the **combined IP and business strategy** supporting it.

tto

A part of Plougmann Vingtoft

WWW.TTO.EU

PLOUGMANN VINGTOFT®



WWW.PV.EU



BTO™

GUIDING GOOD IDEAS

bergento.no
post@bergento.no

Bergen Teknologioverføring AS (BTO)

Bergen Teknologioverføring AS (BTO) is the technology transfer office in Bergen, Norway. We support ten research institutions – including 4,000 researchers and 30,000 students. Our core strength is business development in a broad range of sectors such as oil and gas, aquaculture, marine technologies and medicine. We also provide incubator facilities, and help develop and execute clinical studies. Our mission is to help our owners and partners to bring their research results out to the market, ensuring that knowledge and inventions benefit individuals, the industry and society as a whole.


 Europäisches
Patentamt
European
Patent Office
Office européen
des brevets

[www.epo.org/
searching-for-
patents/helpful-
resources/patlib.
html](http://www.epo.org/searching-for-patents/helpful-resources/patlib.html)

Booths: 10 and 11

[patentinformation@
epo.org](mailto:patentinformation@epo.org)

European Patent Office (EPO)

Our PATLIB network of 300+ European patent information centres is available to advise and support you with services ranging from a simple patent search to the development of an IP strategy. PATLIB centres have a regional role, are located throughout Europe and are familiar with your local industrial, economic and business landscape.

On the EPO stand, you will be able to meet the Liège PATLIB centre and obtain an insight into the array of services that a typical PATLIB centre offers.

Foresight ForesightST

science & technology

[www.ForesightST.
com/](http://www.ForesightST.com/)

Booth: 2

Alyssa Nacewicz
[Sales@ForesightST.
com](mailto:Sales@ForesightST.com)

+1-401-2734844
ext. 4004

Foresight Science & Technology (ForesightST) is one of the world's leading providers of commercialization, technology transfer, and due diligence services. In business for over 38 years, ForesightST has offices in North America and Europe and a vast range of clients including universities, companies, government agencies, laboratories, foundations, and investors. ForesightST's services include: assessing markets and technologies, providing training/mentoring, launching commercialization programs and marketing technologies.

Contact us to learn more about our services or for a custom quote! We are always available to talk about how to add value to your intellectual property and technology assets with a service package tailored to your needs.



[gesval.be /](http://gesval.be/)

Nathalie Benoit, CEO
n.benoit@gesval.be

+32(0) 43498525

Gesval

Since 1999, Gesval is the tech transfer company of Liège and University Hospital, fully owned by them, and is the commercialisation entity based in Interface Enterprise which scope ranges from cooperative research contracts till boosting innovation in the science parks. Role of Gesval is to invest and manage the IP, negotiate and follow the licences, set up new companies and shares in these companies. The team of Gesval and Interface are common, with own total about 25 professionals involved in tech transfer, and 25 others in boosting innovation. The assets of Gesval are in 150 patents families, 143 company creation, with shares in 52 by end 2017, +10 M€ in value, +300 M€ invested money by investors in companies, 1 IPO.



Givaudan

www.givaudan.com

Maria de Bettencourt
Tavares
maria.tavares@
givaudan.com

+41(0) 754325738

Givaudan is the global leader in the creation of flavours and fragrances. In close collaboration with food, beverage, consumer product and fragrance partners, Givaudan develops tastes and scents that delight consumers the world over. With a passion to understand consumers' preferences and a relentless drive to innovate, Givaudan is at the forefront of creating flavours and fragrances that 'engage your senses'. The Company achieved sales of CHF 5.1 billion in 2017. Headquartered in Switzerland with local presence in over 100 locations, the Company has more than 11,100 employees worldwide. Givaudan invites you to discover more at www.givaudan.com.



Inteum

www.inteum.com/

Dave Waddell,
Director and VP
Inteum
davidw@inteum.com

+44(0) 1638720050

Inteum Company, LLC was founded in 1992. Inteum's mission is to develop and support the most comprehensive management information system for the technology transfer profession. Inteum software is installed at over 400 sites in 26 countries worldwide. With an experienced team of in-house developers, led by 16-year Inteum veteran, Tim Hollobon, our solution is constantly refined and enhanced in collaboration with our global client base. Inteum consistently delivers the best support in the industry and we deliver the benchmark service for the market leading software in our field.



The vital tool for your innovations

Detect dead end projects
& increase your ROI
by making good decisions

Access worldwide
market insights in 1 month

50% DISCOUNT
for ASTP participants

www.umi.us/astp

Offer available until 30/06/2018





kiceurope.eu

Booth: 8

Younga Kim
younga.kim@
kiceurope.eu

Charlottenstr. 18,
10117 Berlin

+49(0) 3035512884

KIC Europe

KIC Europe was established in Berlin on 16th March 2017. We are an expert organisation supported by the Korean government's National Ministry of Science and ICT.

We leverage the expertise of following parts; Innovative cooperation based on technology commercialisation, business acceleration and innovation-based incubation services to help cooperation between Korea and EU.

By carrying out various programmes, we enhance greater reciprocal interests and open up access opportunities for Korean technology and SMEs to expand into European markets and vice versa.

We will bring you world-class, powerful and innovative Korean technology and passion.



LifeArc

www.lifearc.org/

Lifearc

LifeArc is a medical research charity with a 25-year legacy of helping scientists and organisations turn their research into treatments and diagnostics for patients.

LifeArc pioneers new ways to turn great science into greater patient impact. It brings together a network of partners to tackle specific diseases and directly funds academic and early stage research.

So far, LifeArc's work has helped to develop four drugs (Keytruda®, Actemra®, Tysabri® and Entyvio®) and a test for antimicrobial resistance.

Find out more at Lifearc.org or Twitter @lifearc1.



www.myipweb.co.uk/

Booth: 1

Jeremy Kirkpatrick
jerrykirkpatrick@
gmail.com

+44(0) 1638720050

myIP

myIP Limited is a leading supplier of web-based IP Management software. Over the past 15 years our committed staff has implemented the myIP platform for clients around the world. Highly customizable and catering for different audiences within your organization, myIP provides a comprehensive way to manage not just your Intellectual Property but also your Innovation Pipeline and Commercialisation activities. Real-time graphical Dashboards allow management to track progress towards corporate goals and researchers are engaged through the Inventor Portal. The myIP Web platform can be hosted internally at your organisation and is also available as a Cloud-hosted option.



www.nlc.nl/

Booth: 4

Nina Rijnders
nina.rijnders@nlc.nl

+31(0) 611617575

NLC

NLC is the European healthtech venture builder, bringing science-based healthtech inventions to life. Due to market complexities at least 95% of healthtech inventions never reach the patient and the market, regardless of their relevance or brilliance. At NLC, we don't accept this status quo. We call this opportunity, by bringing together the best tech, the best people, and the best capital to build life-changing healthtech ventures.

We have designed a bold model to create early stage healthtech innovation. We step in when inventors need us most. We can step in because our model and mission are fully aligned to bring science to life. Our multilingual team is able to speak the languages of the many different silos. We build healthtech ventures, together with leading european research institutes, top-notch hospitals, TTO's, entrepreneurs and global market leaders. Together, we fulfil our mission to bring science to life.





Puratos

Puratos is an international group, which offers a full range of innovative products and application expertise for artisans, industry, retailers and food service customers in the bakery, patisserie and chocolate sectors. Our headquarters are located on the outskirts of Brussels (Belgium), where the company was founded in 1919. Puratos counts over 8000 employees. Products and services are available in over 100 countries around the world. In many cases, they are produced locally by our subsidiaries. Above all, we aim to be 'reliable partners in innovation' across the globe to help our customers deliver nutritious, tasty food to their local communities.

www.puratos.com

Booth: 6

Pascale Jantcheff,
Group Marketing
Services Director
info@puratos.com

+32 (0)2 481 44 44



Qbic

Qbic is a seed and early-stage and sector agnostic inter-university fund investing in spin-offs and young innovating companies that have a technology link with Qbic's partner universities and research institutions. Qbic is managed by an independent team of seasoned investment and business professionals. The first Qbic fund - Qbic I - has been incorporated in 2012 with a capital of € 40,7 million and invested in 18 companies. Qbic I is currently focusing on follow on investments and exits. The second Qbic fund - Qbic II - started in December 2016. With an aggregate € 90 million under management, Qbic is one of the largest inter-university spin-off funds in Europe.

qbic.be/

Jean Van Nuwenborg
jean.vannuwenborg@qbic.be



Spinventure SA

Spinventure has grounded in 1999 as a joint venture between Gesval, on behalf of ULiège, and Meusinvest, the local investment fund for SME's. Gesval has to prepare and assess the projects, and Spinventure has access to public funding for start-ups and play the role of (pre) seed investment fund, with independent decision. Today Spinventure has an investing capacity of about 20 M€.

www.meusinvest.be

Marc Foidart
m.foidart@meusinvest.be

+32(0) 42205600



tto

tto specializes in building value from new technologies and intellectual property rights (IPR) and our core competency is assisting clients moving early stage technologies towards commercialization or exit. We work with universities, innovative startups, public institutions, large companies and investors.

www.tto.eu

Booth: 9

tto is part of Plougmann Vingtoft – which has recently been ranked IP Firm of the Year for Denmark. This means we can also help protect and strengthen your company's IP rights.

Since 2004, we have worked for more than 160 different clients covering several hundred projects – including more than 25 universities in Europe.



www.uliege.be

University of Liège

Established two centuries ago at the heart of a millenary city and principality, an intellectual centre since the Middle Ages, the University of Liège is embedded in an industrial valley open to the world, at the crossroads of teaching, research and innovation at the junction of European cultures.

Welcoming more than 23,000 students from 132 nationalities, 3,500 teachers and researchers, and offering one of the most diversified educational offer in French speaking Belgium, ULiège has links with 1,000 institutions worldwide and is involved in many international academic and scientific networks.

ULiège has also a long tradition of research (>50% of the budget) and of cooperative research with enterprises (>30%), and set up the first tech transfer department in 1989. Aerospace, biotech, human health, animal health, agrofood, materials, ICT, are some of key technology areas with a transdisciplinary approach. ULiège has also played a key role in the transformation of the local economy from heavy industry to advanced technology oriented activities.



www.vo.eu

Booth: 3
(Thursday)

Marco Box
m.box@vo.eu

+32(0) 42465110

V.O. Patents & Trademarks

V.O. Patents & Trademarks is one of the larger independent Intellectual Property firms in Europe. We have wide expertise and many years of experience in Chemistry, Life Sciences, Engineering and Software/ICT. More than 60 attorneys support clients worldwide to maximize the value of their intellectual property.

Clients range from tech starters and mid-sized innovators to knowledge centers and multinationals. They include leading national and international companies and institutes. With nine offices in Belgium, the Netherlands and Germany, we operate in a global network of professionals.



www.wagralim.be

François Heroufousse
Francois.heroufousse@wagralim.be
+32(0) 71919286

Wagralim

Wagralim is the Agro-Food Cluster in Wallonia, active since 2006. We count over 160 members from industry, academia and training centers.

The Cluster is specialized in the set-up of collaborative projects in Nutrition, Industrial Efficiency and Sustainability including international partners.

In 2016 Wagralim joined the Universities to launch Keyfood, acting as a technological platform for the agro-food industry. Keyfood allows industries to collaborate with academia. In order to get access to targeted scientific expertise: analytical trials, product and process development, provision of equipment, prototypes.



www.wbc-incubator.be

Serge Pampfer
contact@wbc-incubator.be

+32(0) 2034696449

WBC

Financing & guiding healthcare innovation in Wallonia.

WBC accelerates the creation and maturation of biotech, medtech and healthtech companies with a set of programs and tools that address the priority aspects of financing, management, production and market access.

WBC support is available for e-health solutions and for selected nutrition or environment applications. These emerging companies can be either academic spin-offs, entrepreneurial start-ups or corporate spin-outs.

WBC gives access to a pool of pre-qualified managers, business developers and independent directors as well as to a large network of experts, investors and incubation - acceleration partners.



72



Ximbio

Ximbio is the world's largest non-profit reagent technology transfer service with an online portfolio of diverse and unique research reagents sourced globally. Scientists can exchange knowledge and maximise commercial opportunities for research reagents they have created. Our mission is to make these novel reagents easily available to scientists to accelerate life science research.

Booth: 5

+44(0) 2034696449

Ximbio is dedicated exclusively to life science research reagents of all kinds including antibodies, cell lines, mouse models and small molecules. These reagents are the cornerstones of basic scientific research that scientists can use to test their hypotheses, validate their ideas or develop new concepts.



www.health-breakthrough.eu



Osteoarthritis Foundation

Private foundation established in 2015

The Osteoarthritis Foundation thanks ASTP-Proton and the conference speakers for converting their conference gifts into a donation to our foundation. Dedicated, as we are, to ensure the best treatment of osteoarthritis, we support basic research, award prizes to meritorious researchers and create information and awareness campaigns. Your donation shall help us continue our work.

ASTP-Proton now offers the Road to RTPP (Support your your journey towards Technology Transfer Professional status)

Discover our:

- Customised courses tailored to your background, skills, ambitions and interests
- Dedicated guides and RTPP mentors
- Personal guide that will facilitate introductions to people, networks and courses which will be beneficial to your career

headquarters@astp-proton.eu



Your Global Reagents Partner



YOUR REAGENT CAN BE THE NEXT ESSENTIAL RESEARCH TOOL

Ximbio is the world's largest non-profit reagent technology transfer service with an online portfolio of diverse and unique research reagents sourced globally.

Ximbio is dedicated exclusively to life science research reagents of all kinds including antibodies, cell lines, mouse models and small molecules. These reagents are the cornerstones of basic scientific research that scientists can use to test their hypotheses, validate their ideas or develop new concepts. Ximbio provides a service for inventors, suppliers and users of novel reagents which contributes to our primary mission of advancing scientific research.

Why use Ximbio:

- Leverage market reach and deal experience with our reagent partners
- Store and protect your reagents at our repositories
- Manufacture and reproduce your reagents at our cost
- Deliver finished products to the end user or licensee
- Return income to your institution with our generous revenue share scheme



www.ximbio.com

ASTPPROTON[®]
KNOWLEDGE TRANSFER EUROPE

2018 Fall Meeting
Leiden, the Netherlands

#ASTPProton18

7 - 8 November, 2018